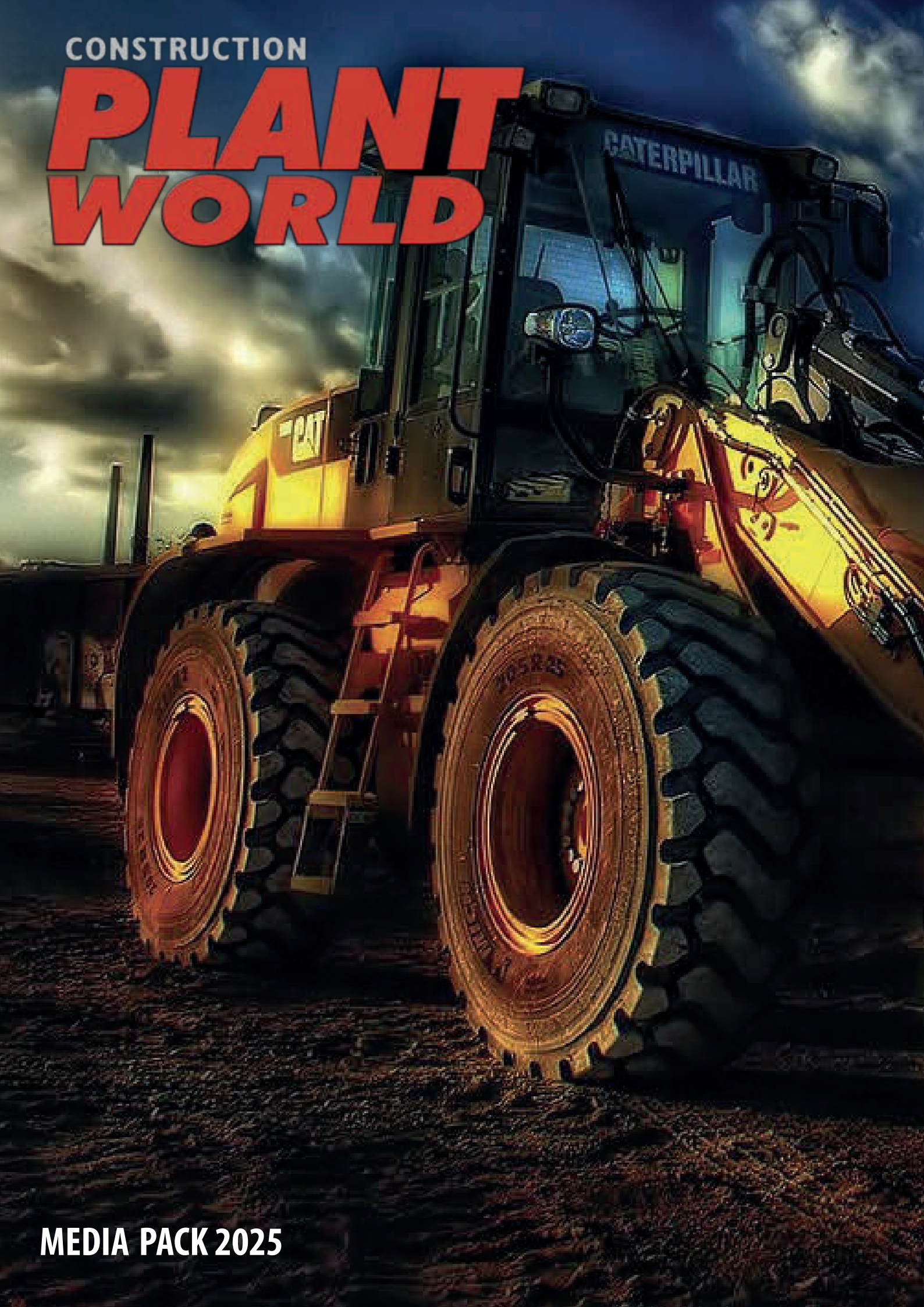


CONSTRUCTION

# PLANT WORLD



MEDIA PACK 2025

# CONSTRUCTION **PLANT WORLD**



## **ABOUT US**

Construction Plant World was launched in 1980 to meet the needs of buyers and sellers of plant and equipment worldwide.

In conjunction with our website, [www.ConstructionPlantWorld.com](http://www.ConstructionPlantWorld.com), our combination of a Printed / Online journal and unlimited website listing, enables your machines and parts to be seen by a vast audience of buyers and sellers, across print, desktop, tablet and mobile devices.



We have developed our website from the ground up to make it the easiest to use across our industry.

All our journal advertisers can advertise an unlimited number of machines or parts, online **completely free of charge** for the duration of the issue.

## **CONTACTS**

Carole Titmuss - Publisher

Lorraine Compton - Sales Manager

[Info@ConstructionPlantworld.com](mailto:Info@ConstructionPlantworld.com)

Construction Plant World is part of Sheen Publishing Ltd,  
50 Queens Road, Buckhurst Hill, Essex IG9 5DD, UK  
Tel: +44 (0) 208 504 1661

[www.ConstructionPlantWorld.com](http://www.ConstructionPlantWorld.com)

# CONSTRUCTION **PLANT WORLD**



## **CIRCULATION**

With over 40 years experience in the industry, Construction Plant World is published every two weeks and has built up a loyal readership who influence the buying and selling of new and used equipment.

Over 36,000 persons receive the latest issue of Construction Plant World.

In addition to this, visitors to our website read the latest issue whilst buying and selling machines and parts.

We also send out targeted advertising ('E-Shots') to our online readership.

Construction Plant World is published every two weeks.

### **Breakdown by Specialised Sector**

Building and Engineering Contractors ...	29%
Plant Equipment Hirers .....	12%
Specialist Sub Contractors .....	21%
Mining and Civil Engineering .....	10%
Dealers and Distributors .....	28%



Please contact Lorraine for advertising bookings  
Email: [Info@constructionplantworld.com](mailto:Info@constructionplantworld.com) Tel: +44 (0)208 504 1661

# ADVERTISING

## JOURNAL ADVERTISING

### DOUBLE PAGE SPREAD (DPS)

Size: 277mm wide x 190mm high  
Cost: £275.00

### FULL PAGE

Size: 123mm wide x 190mm high  
Cost: £185.00

### HALF PAGE HORIZONTAL

Size: 123mm wide x 93mm high  
Cost: £125.00

### HALF PAGE VERTICAL

Size: 59mm wide x 190mm high  
Cost: £125.00

### QUARTER PAGE

Size: 59mm wide x 93mm high  
Cost: £85.00

### EIGHTH PAGE

Size: 59mm wide x 42mm high  
Cost: £50.00

## WEB ADVERTISING

### LEADERBOARD

Size: 728 pixels wide x 90 pixels high  
Cost: £300.00 per month

### MEDIUM RECTANGLE

Size: 300 pixels wide x 250 pixels high  
Cost: £200.00 per month

**File formats accepted: Animated Gif,  
Jpeg, PNG, Tiff, Psd**

### E-SHOT / SOLUS EMAIL

(direct marketing to our  
subscriber database of over 36,000 individuals  
involved in the construction industry. Cost P.O.A

### NEWSLETTER SPONSORSHIP

(Leaderboard banner on Construction Plant World  
newsletter - sent to our list every two weeks on  
issue date) Cost P.O.A

All prices excluding VAT

**Also Available: Front and Back Covers**

Please contact Lorraine for advertising bookings  
Email: [Info@constructionplantworld.com](mailto:Info@constructionplantworld.com) Tel: +44 (0)208 504 1661